



Your Service News

Special points of interest:

- Staines Upon Thames Day
- Staines Pancake Race
- Remap

Inside this issue:

<i>Shopmobility Funding</i>	2
<i>Staines Upon Thames Day</i>	3
<i>Pancake Race</i>	4
<i>Remap</i>	5
<i>Vehicle Sponsorship</i>	5
<i>Useful Links</i>	6

Digital TV Switchover



Please note that TV across the UK is going digital with the Greater London / Home Counties due to switch in two stages, starting on the 4th of April 2012 until the 18th of April 2012. There will be no analogue signal after this time so you will need to prepare for the switchover by this time.

If you need more help then visit www.digitaluk.co.uk or call on 08456 50 50 50. You can also get help from the Switchover Help Scheme by visiting www.helpscheme.co.uk or calling 0800 40 85 900. This scheme is run by the BBC and is designed to help older and disabled people to switch from analogue to digital TV. The standard option provides: easy to use equipment; installation by an approved installer; a 12-month aftercare service including free helpline. This is available for £40 all inclusive or free for eligible people on certain income related benefits. Shopmobility also has leaflets and other information on the switchover so please ask a member of staff if you would like to know more.

British Summer Time



This weekend marks the beginning of Summer so don't forget to move your clocks forward one hour from midnight on Saturday 24th of March!

Staines Shopmobility Funding

We are pleased to announce that funding is now in place to enable us to continue providing the service through the next financial year, which runs from April 2012 to March 2013.

The annual cost of providing the service is in the region of £60,000 and as an independent registered charity we are solely responsible for raising this money. The charge to use the service is reviewed annually and kept as low as possible to ensure it remains affordable to all. Service charge income equates to around 20% of our total costs leaving a further £48,000 to be raised. This is achieved through a mix of fundraising, donations and grant funding so every contribution received is vital to the continuation of the charity.



Spelthorne Borough Council has awarded us a grant of £14,300 for the financial year 2012/13 and has indicated this will be repeated in 2013/14 and 2014/15. This is a reduction on previous years due to central government spending cuts and was to be expected. The council has always supported the work of Shopmobility and we are very grateful for their continued support in these difficult economic times.



The Two Rivers has agreed funding of £15,000 for 2012/13 and a further £15,000 for 2013/14; additionally the centre provides our premises on a peppercorn rent further reducing our outgoings. This support has helped to bridge the reduction in council grant funding going forward and we would like to thank the Two Rivers for their support.

Clerical Medical, leaseholder of the Elmsleigh Centre, has awarded us a grant of £10,000 for the current financial year and will review this for the coming year 2012/13. We are hopeful that Clerical Medical will assist us again during the next financial year and we would like to express our gratitude for their support.



This funding leaves us with an annual shortfall of around £8,000 to be made up through fundraising and donations. It is therefore crucial to the long-term future of the charity that we continue to be successful with our fundraising efforts.

The charity currently has reserves of £30,000 invested with the Charities Aid Foundation bank. This is in line with the current reserves policy of holding 6-months running costs to safeguard against unexpected items of expenditure and to cover any costs should the charity dissolve.

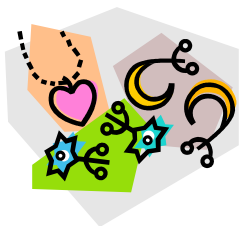
The charity is currently trying to engage the local business community to assist us financially to help keep the town accessible to people with limited mobility. These businesses benefit directly through the revenue spent by users of the service and it is hoped that they will help to support our work.

Your on-going use of the service and continued support of our fundraising is greatly appreciated and makes a very real difference to our remaining open. We would like to thank you for this and we hope to carry on providing our services to you for as long as they are needed.

Recycle Scheme

We have come up with a simple way for you to help boost the much needed funds of our charity and benefit your environment. We are running an unwanted Jewellery Recycling Collection.

Please donate any unwanted jewellery towards this recycling appeal; gold, silver, costume jewellery, watches... Then all your unwanted items can be turned into a donation for us.



You can do a full "spring clean" of your jewellery box or just give items you no longer wear. Even damaged, broken and incomplete items will help; so all the odd earrings and snapped chains are a great start!

You can either bring your unwanted jewellery to us when you visit or take one of the envelopes available and post your items free of charge.

If you can, please ask your family, friends and colleagues to participate in this Jewellery Recycling Collection.

Why should I recycle? Recycling reduces the demand for raw materials. This means less mining or quarrying. Many parts of the world have been blighted by mining and quarrying, which destroy the natural environment and wildlife habitats and can cause environmental and health problems for local people. Recycling is one way in which our community can lessen their usage of resources and help protect the environment. Everything you give us is turned into cash for us, recycled and put to good use!

Thank you very much for your support.

Staines Upon Thames Day

As you are aware, Staines has recently changed its name to Staines-upon-Thames. To celebrate the name change, the Mayor of Spelthorne is holding a great family event, Staines-upon-Thames Day, on Sunday 20 May 2012 in the Memorial Gardens.

There will be a celebration of the town's name change and an exciting range of riverside activities including a charity duck race, boat trips and boat club races.



The event is intended to improve awareness and encourage increased recreational and commercial use of the River Thames. It is anticipated that this fun event will also feature musical entertainment and play host to local sports clubs, community groups and charities who will run stalls, games and demonstrations.

Staines Shopmobility will be manning a stall to raise awareness of its services and will be fundraising on the day so please come along and support us.

A fascinating exhibition from Spelthorne Museum and the repositioning of the replica London Stone are being planned to engage communities in the town's rich heritage, history and tradition.

Staines-upon-Thames will also celebrate the lead up to the Olympics 2012 with themed activities and guests being coordinated for the day.

We look forward to seeing you there on the day!

Staines Charity Pancake Race

Shrove Tuesday saw the staging of the 6th Staines Charity Pancake Race in aid of Staines Shopmobility. The weather was kind to us and a good crowd turned out to watch the teams racing in a variety of fancy dress costumes. Radio Wey held an outside broadcast providing a mix of music and commentary on the races, helping to raise awareness of the charity and its work.



Teams were entered from local businesses including Frankie & Benny's, Two Rivers, Elmsleigh Centre and Virgin Active. After a series of knockout heats the final was contested between Virgin Active and Frankie & Benny's. A tight final saw Virgin Active overcome Frankie & Benny's by the narrowest of margins to retain the title of Pancake Race champions!

A special mention must go to Crepe & Suzette, the team entered by Spelthorne Borough Council, who raised over £600 in sponsorship for the charity. Barclays bank held a tombola in aid of Shopmobility on the day and kindly agreed to match the total raised. The final figure is expected to be in the region of £2,500, a new record for the race.



Passport Scheme

Staines Shopmobility is hoping to set up a passport scheme in conjunction with other schemes in the local area. This will enable members of one scheme being able to visit other schemes locally without the need to register again and undertake induction training on their chosen equipment. It is hoped that local schemes including Windsor, Hounslow, Woking, Bracknell and Kingston will join this initiative making Shopmobility even easier for you to use. We will keep you updated as we have more details for you.

Sales Items Needed

As many of you will know, Staines Shopmobility has a small sales corner offering items such as glasses, alarm clocks and assorted bits. These are items donated by our members and usually consist of unwanted gifts. We also have books for sale and again these are generally donated by our members. These sale items generate much needed income for the charity and help us to continue providing our service to you. If you have any unwanted gifts or second hand books that you would like to donate to our cause then please bring them to us when you next visit the service. We thank you for your support!



Easter Raffle

We are currently holding an Easter Raffle to raise funds for the charity and hope that you will all support us by buying some tickets when you visit.

There are lots of prizes to be won including Easter Eggs, bottles of drink and cuddly toys. Tickets are on sale priced at £1 for a strip of 5 so please buy yours today and help raise funds for your service.



Vehicle Sponsorship

We are pleased to report that we have obtained sponsorship for 12 mobility scooters bringing revenue of £3,000 to the charity. The Two Rivers has agreed to sponsor 8 mobility scooters and the Elmsleigh Centre has agreed to sponsor 4 scooters. We would like to thank the two shopping centres for helping us to keep Staines accessible to people with limited mobility.



Businesses are encouraged to sponsor the cost of servicing and maintaining our mobility chairs for a period of 12 months at a cost of £250. In return the chair will display the sponsor's company logo giving them a visible presence around the town on a daily basis. Please contact us if you would like further information on the vehicle sponsorship scheme.

Custom Made Equipment

Remap is a national charity working through local groups of skilled volunteers to help people with disabilities achieve independence and a better quality of life. Remap make or modify equipment when nothing suitable is available through mainstream sources. Items are tailor-made to be suitable for individual needs and to make a real difference to people's ability to rise to a particular challenge and achieve something not otherwise possible for them.



Remap has a network of volunteers organised into 80 local panels across England, Wales and Northern Ireland. Remap volunteers are professional engineers, craftspeople, technicians, healthcare professionals and skilled helpers, who freely give their time and expertise to improve the lives of others. When a referral is received by a Remap panel (direct referrals may be accepted) a visit to the client is arranged to discuss what it is they want to be able to do and what barriers stand in the way of their doing it. The challenge will be discussed and solutions considered. Equipment is designed and made to solve the client's specific problem, or a standard product can be modified to suit. Remap will not be able to help if there is a suitable solution to the problem commercially available as they do not aim to replicate items available from other sources. For further information call 0845 130 0456 or visit www.remap.org.uk

Staines Shopmobility
Two Rivers Retail Park
Mustard Mill Road
Staines
TW18 4WB

Phone:
01784 459416

Email:
stainesshopmobility@talktalkbusiness.net

Opening Times: 9.30 am—4.15pm
Monday to Saturday

Staines Shopmobility – Board of Trustees

Gerry Ceaser – Chairman

Simon Bhadye – Vice-Chairman

Terry Collier – Treasurer

Christine Bannister – Trustee

Keith Goldson – Trustee

Wyn Pockett – Trustee

Margaret Roberts – Trustee

Marian Rough – Trustee

June Wallen – Trustee

Penny Wright – Trustee

Gill Warner – Trustee

Do you have a story or info you would like to see included in future newsletters? Please speak to a member of staff or contact us via the details listed at the top left of this page. We would also welcome any comments or suggestions to help us improve your service newsletter.



Making Staines Accessible

We're on the web!
www.stainesshopmobility.co.uk

If you would like to support our work by way of a donation then please send a cheque payable to 'Staines Shopmobility' and post to the address above. To make a donation online please visit:

<http://uk.virginmoneygiving.com/charities/stainesshopmobility>



Useful Links

Spelthorne Committee for Action Now (SCAN)

SCAN promotes improved access to premises, services, information and leisure in Spelthorne. Telephone: **07967 499829** www.spelthorneaccess.org.uk

Age Concern Spelthorne

Age Concern provides help and advice for older people and services include holidays and outings, insurance, library service for the housebound and a handyman service. Telephone: **01784 444200** www.ageconcernspelthorne.org.uk

Spelride / Dial A Ride

Spelride is the accessible transport service for Spelthorne and Dial A Ride covers residents of Runnymede. Spelride Telephone: **01784 446253** Dial A Ride Telephone: **01932 425875**

Spelthorne Borough Council

Spelthorne Borough Council provides local services and information for Spelthorne. Tel: **01784 451499** www.spelthorne.gov.uk